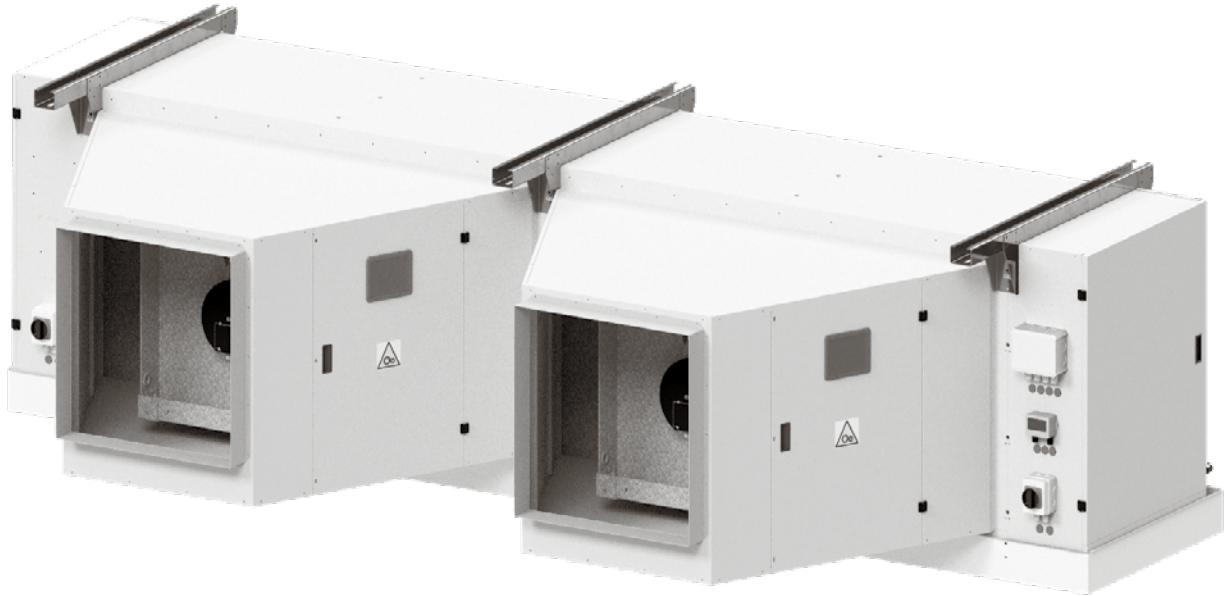


RCE 50A | 63A



PLUG FUN

CONSTRUCTION CHARACTERISTICS

- ~ 16 mm O.D. seamless copper tube expanded into aluminium fins. Stainless Steel tube on request
- ~ casing in white pre-coated aluminium and galvanized steel or stainless steel on request
- ~ EC centrifugal fan
- ~ on request:
 - protective treatment of coils
 - brine mode use

DEFROST

- ~ AIR: "A" without defrost system
- ~ WATER: "W" by means of sparge pipe
- ~ ELECTRIC: "E" stainless steel sheathed electric heaters, vulcanized terminals
- ~ SPECIAL: hot gas defrost

CARATTERISTICHE COSTRUTTIVE

- ~ batteria realizzata con tubo di rame Ø 16mm ed

PLUG FUN

- aletta di alluminio. A richiesta realizzazione con tubo di acciaio inox*
- ~ involucro in alluminio preverniciato e lamiera zincata bianca o inox su richiesta
- ~ EC ventilatori centrifughi
- ~ a richiesta possibilità di:
 - trattamenti protettivi della batteria
 - funzionamento ad acqua glicolata

SBRINAMENTO

- ~ ARIA: "A" senza sistema di sbrinamento
- ~ ACQUA: "W" con sistema a pioggia
- ~ ELETTRICO: "E" a mezzo resistente corazzate in acciaio inossidabile con terminali vulcanizzati
- ~ SPECIALE: gas caldo in vari sistemi

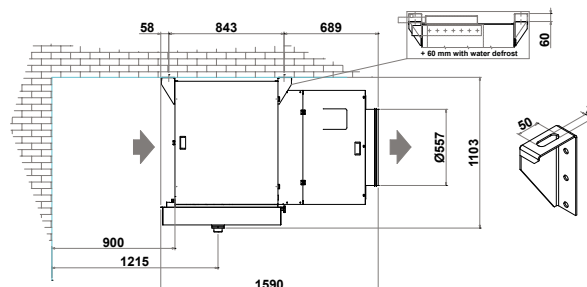
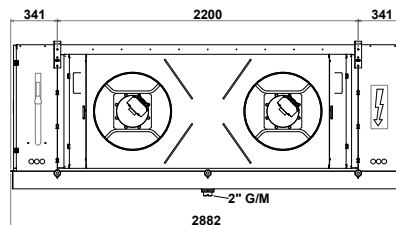
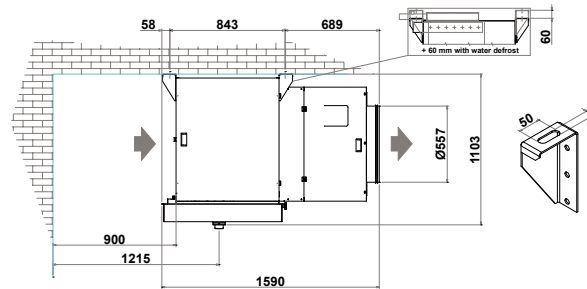
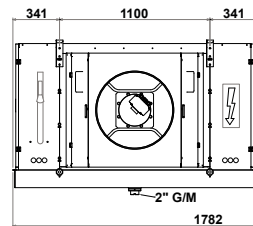
EC MOTORS
AVAILABLE



by
ebmpapst

Model Modello	Capacity Resa T _c =0°C DT 8K	Capacity Resa T _c =-25°C DT 6K	Air Flow Portata Aria	Air Throw Freccia Aria	Surface Superficie	Internal Volume Volume Interno	Motorfans Motoventilatori				Electrical Defrost Sbrinamento Elettrico		Water Defrost Sbrina- mento Acqua	Sound Pressure Pressione Sonora	Wei- ght Peso	Con- nections Connes- sioni
	SC2	SC4					Ø 500	Tensione 400V/3F/50Hz			Standard	Enhanced				
RCE 50A	kW	kW	m ³ /h	m	m ²	dm ³	n°	W	A	rpm	kW(@ 230V/1F)	kW(@ 230V/1F)	l/h	dB(A) @ 5m	kg	IN/OUT Ø mm

Fin Space	- 6 mm															
RCEH 501 AP60D	14,13	10,17	10113	43	44	16	1	1320	2,10	1350	5820	/	2910	68 / 5	149	16/28
RCEH 501 AP60F	19,56	14,01	9974	42	67	24	1	1320	2,10	1350	5820	/	2910	68 / 5	164	16/28
RCEH 501 AP60H	24,36	17,42	9843	42	89	32	1	1320	2,10	1350	17550	/	11700	67 / 5	179	28/35
RCEH 501 AP60L	28,31	20,18	9717	41	111	40	1	1320	2,10	1350	17550	/	11700	67 / 5	194	28/35
RCEH 501 AP60N	31,81	22,60	9599	41	133	48	1	1320	2,10	1350	31800	/	23850	67 / 5	214	28/35
RCEH 502 AP60D	28,77	20,72	20226	45	89	30	2	2640	4,20	1350	15900	/	7950	71 / 5	260	28/35
RCEH 502 AP60F	39,91	28,64	19948	44	133	45	2	2640	4,20	1350	20700	/	10350	71 / 5	295	28/42
RCEH 502 AP60H	49,67	35,56	19685	43	178	60	2	2640	4,20	1350	31050	/	20700	70 / 5	330	28/42
RCEH 502 AP60L	57,94	41,36	19435	43	222	75	2	2640	4,20	1350	8730	/	5820	70 / 5	365	28/54
RCEH 502 AP60N	64,90	46,19	19195	42	266	91	2	2640	4,20	1350	11640	/	8730	70 / 5	400	35/54



RCE 50A