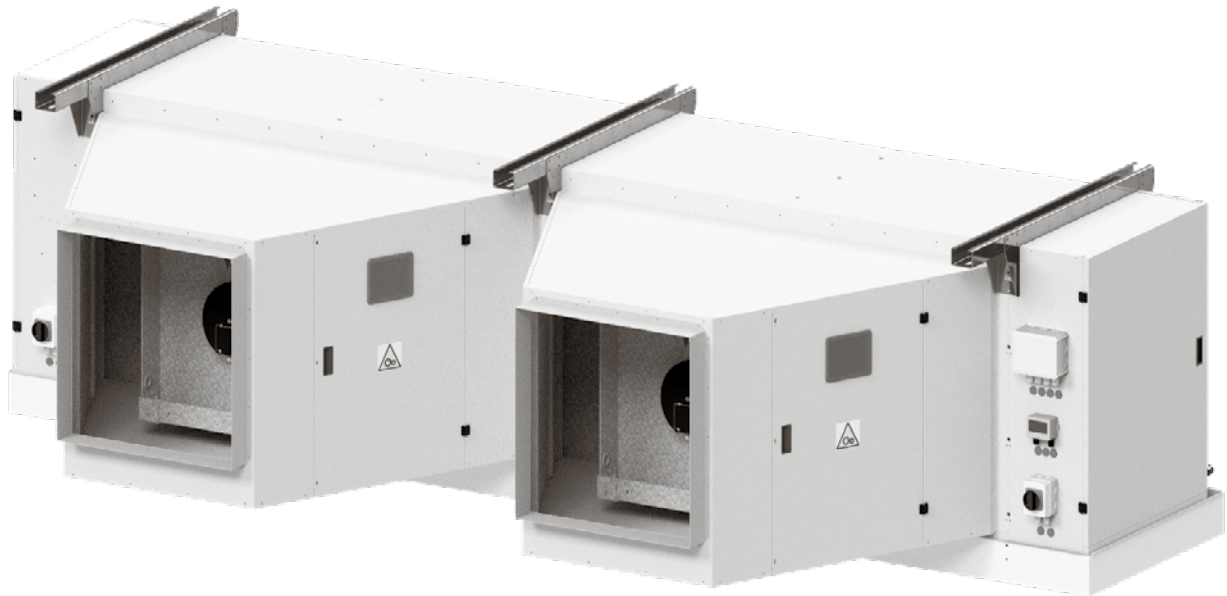


# RCE 50A | 63A



## PLUG FUN

### CONSTRUCTION CHARACTERISTICS

- ~ 16 mm O.D. seamless copper tube expanded into aluminium fins. Stainless Steel tube on request
- ~ casing in white pre-coated aluminium and galvanized steel or stainless steel on request
- ~ EC centrifugal fan
- ~ on request:
  - protective treatment of coils
  - brine mode use

### DEFROST

- ~ AIR: "A" without defrost system
- ~ WATER: "W" by means of sparge pipe
- ~ ELECTRIC: "E" stainless steel sheathed electric heaters, vulcanized terminals
- ~ SPECIAL: hot gas defrost

### CARATTERISTICHE COSTRUTTIVE

- ~ batteria realizzata con tubo di rame Ø 16mm ed

## PLUG FUN

- aletta di alluminio. A richiesta realizzazione con tubo di acciaio inox*
- ~ involucro in alluminio preverniciato e lamiera zincata bianca o inox su richiesta
- ~ EC ventilatori centrifughi
- ~ a richiesta possibilità di:
  - trattamenti protettivi della batteria
  - funzionamento ad acqua glicolata

### SBRINAMENTO

- ~ ARIA: "A" senza sistema di sbrinamento
- ~ ACQUA: "W" con sistema a pioggia
- ~ ELETTRICO: "E" a mezzo resistente corazzate in acciaio inossidabile con terminali vulcanizzati
- ~ SPECIALE: gas caldo in vari sistemi

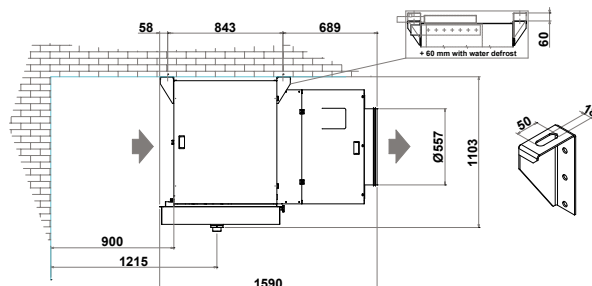
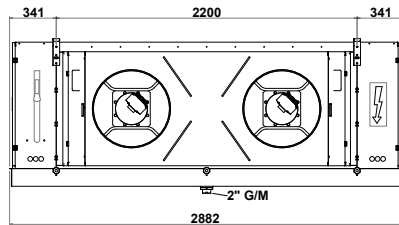
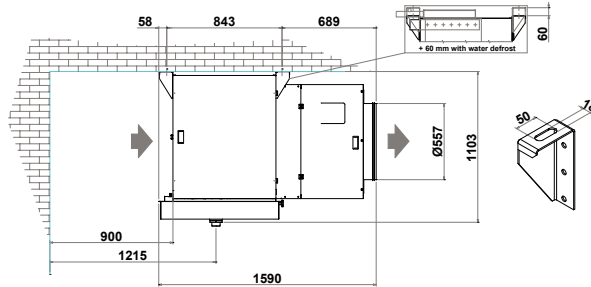
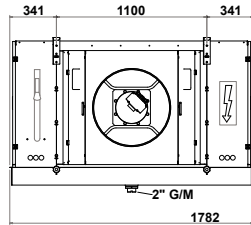
EC MOTORS  
AVAILABLE



by  
**ebmpapst**

Model Modello	Capacity Resa Tc=0°C DT 8K	Capacity Resa Tc=-25°C DT 6K	Air Flow Portata Aria	Air Throw Freccia Aria	Surface Superficie	Internal Volume Volume Interno	Motorfans Motoventilatori				Electrical Defrost Sbrinamento Elettrico		Water Defrost Sbrina- mento Acqua	Sound Pressure Pressione Sonora	Wei- ght Peso	Con- nections Connes- sioni
	SC2	SC4					Ø 630	Tensione 400V/3F/50Hz			Standard	Enhanced				
RCE 63A	kW	kW	m³/h	m	m²	dm³	n°	W	A	rpm	kW(@ 230V/1F)	kW(@ 230V/1F)	l/h	dB(A) @ 5m	kg	IN/OUT Ø mm

Fin Space	- 6 mm															
RCEH 631 AP60D	21.36	12.7	19049	64	111	38	1	2650	4,10	1270	11700	/	5850	69 / 5	180	28/35
RCEH 631 AP60F	29.32	17.78	19049	64	166	57	1	2650	4,10	1270	17550	/	11700	69 / 5	320	28/42
RCEH 631 AP60H	35.63	21.59	19049	64	222	75	1	2650	4,10	1270	17550	/	11700	69 / 5	360	28/54
RCEH 631 AP60L	41.07	25.07	18935	64	277	94	1	2650	4,10	1270	31800	/	23850	69 / 5	400	35/54
RCEH 631 AP60N	45.17	27.9	18809	63	333	113	1	2650	4,10	1270	39750	/	23850	69 / 5	445	35/54
RCEH 632 AP60D	43.11	26.13	38099	67	222	73	2	5300	8,20	1270	20700	/	10350	72 / 5	510	35/54
RCEH 632 AP60F	59.42	36.12	38099	67	333	110	2	5300	8,20	1270	31050	/	20700	72 / 5	585	35/67
RCEH 632 AP60H	72.6	44.2	38099	67	444	147	2	5300	8,20	1270	31050	/	20700	72 / 5	660	35/67
RCEH 632 AP60L	82.41	50.6	37870	66	555	183	2	5300	8,20	1270	11640	/	8730	72 / 5	735	35/67
RCEH 632 AP60N	91.1	55.79	37615	66	666	220	2	5300	8,20	1270	14550	/	8730	72 / 5	815	35/76



RCE 63A