

edition
09/24 v.1

www.kfl-est.com



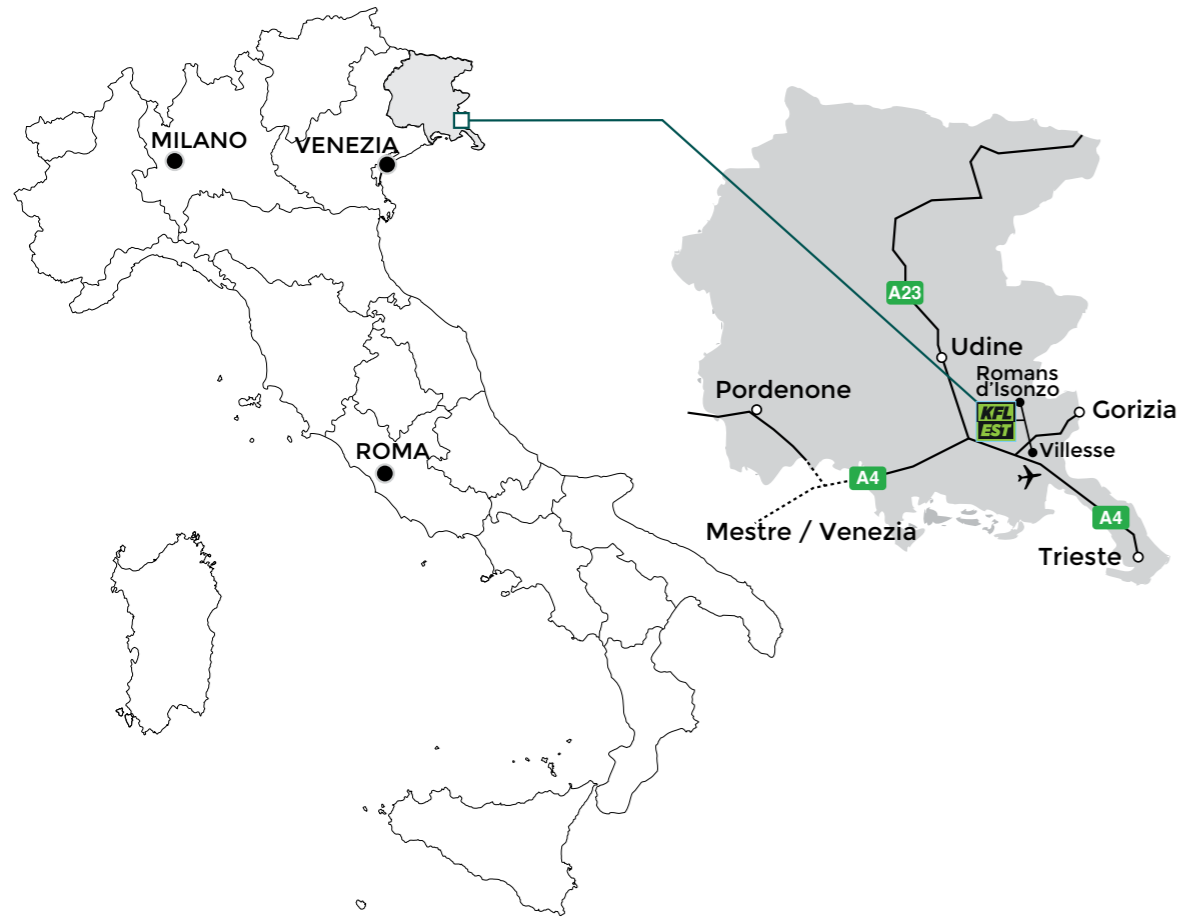
K.F.L. EST . . . A FUSION OF IDEAS AND MEN

Knowledge and **technology**
are our business philosophy.
Flexibility and willingness are our aims.
Each production stage is targeted in
order to ensure performance, safety and
quality.

EVERYTHING
YOU CONSIDERED
~~A PRODUCT~~
IS NOW A SERVICE

WHERE YOU CAN FIND US

North-East Italy,
near the border with Slovenia



www.kfl-est.com

PRODUCTION

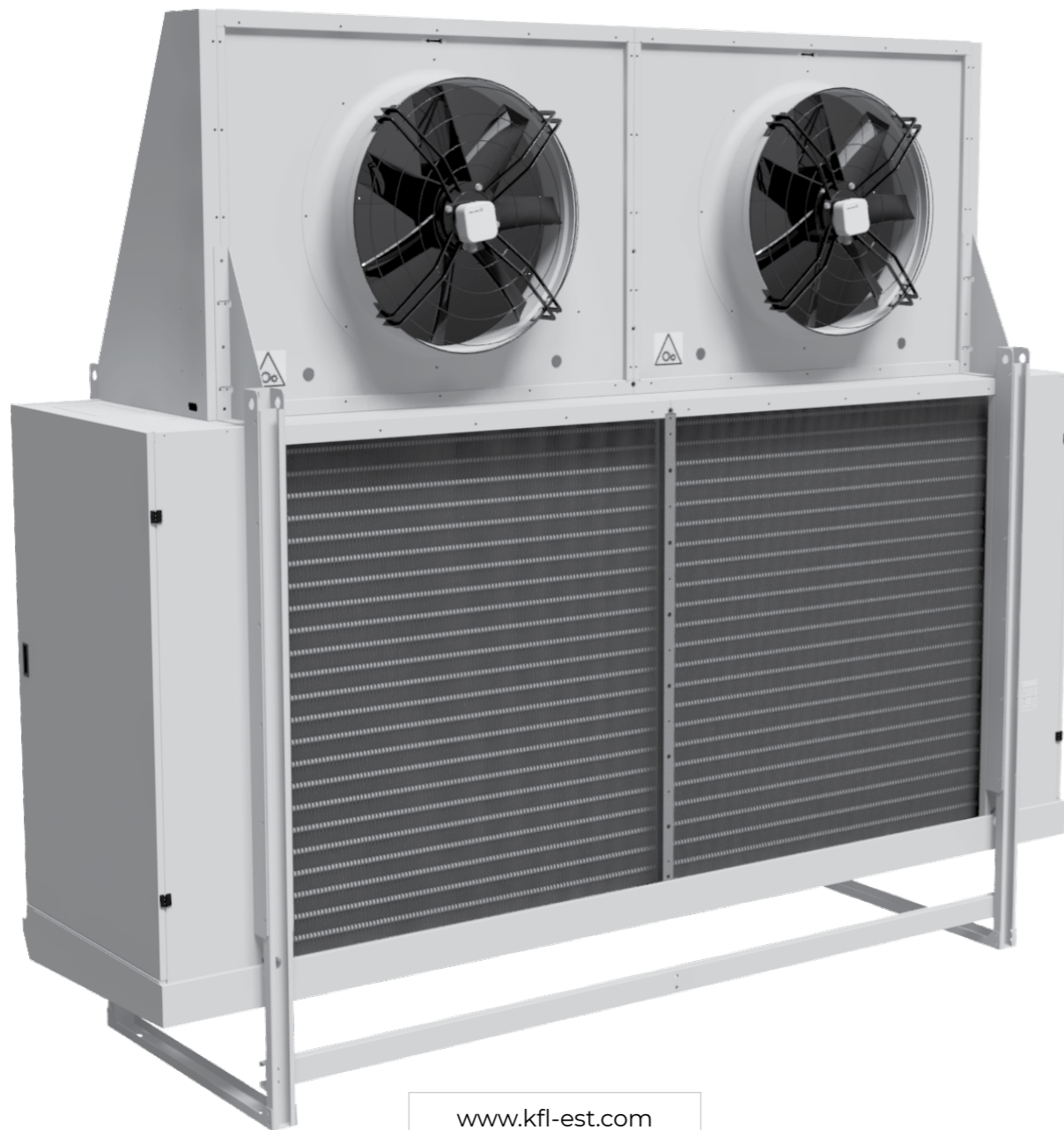
Our production line covers the entire range of heat exchangers: water coils, evaporators, condensers, free cooling, air coolers, remote condensers, NH3 Coils and special coils upon request.

DESCRIPTION

We can optimize each heat exchanger according to its application thanks to four available copper tube diameters in different geometries and three available on stainless steel tube.



OUR PRODUCTS



www.kfl-est.com



UNIT COOLERS

- Capacity up to 200 kW
- Different solution to comply with any request (Corner, dual discharge, cubic, blast freezer, radial, U.S.P.H.S.)
- Dedicated range for Brine, NH₃ and Co₂ fluids.
- Possible material combinations (tube/fins):
 - Cu/Al
 - Cu/Pre-Painted Al
 - Cu/Cu
 - SS304L/Al
 - SS316L/Al
 - Full stainless steel coils
- Special treatments:
 - Cataphoresis treatment
 - Full inox frame
 - ATEX fans



COILS

- Water Coils, Evaporators, Condensers, NH₃ Coils
- Tube diameter available from 8 mm O.D. up to 16 mm
- Possible material combinations (tube/fins):
 - Cu/Al
 - Cu/Pre-Painted Al
 - Cu/Cu
 - SS304L/Al
 - Full stainless steel coils
- Special treatments:
 - Cataphoresis
 - C5 treatments



REMOTE CONDENSERS

- Capacity up to 2400 kW
- Low charge commercial REMOTE CONDENSERS
- Possible material combinations (tube/fins):
 - Cu/Al
 - Cu/Pre-Painted Al
 - Cu/Cu
 - SS304L/Al
 - SS316L/Al
 - Full stainless steel coils
- Special treatments:
 - C5 treatments
 - Full inox frame
 - ATEX fans



DRY COOLERS

- Capacity up to 1800 kW
- Possible material combination (tube/fins):
 - Cu/Al
 - Cu/Pre-Painted Al
 - Cu/Cu
 - SS304L/Al
 - SS316L/Al
 - Full stainless steel coils
- Special treatments:
 - C5 treatments
 - Full inox frame
 - ATEX fans
- Adiabatic systems:
 - Spray and pad

UNIT COOLERS

models available



Single Flow	<i>Commercial</i>
	<i>Commercial</i>
Wall single flow	<i>U.S.P.H.S.</i>
Cubic	<i>U.S.P.H.S.</i>
Double Flow	<i>Commercial</i>
	<i>Commercial</i>
Cubic	<i>Commercial</i>
Double Flow	<i>Industrial</i>
Cubic	<i>Industrial</i>
	<i>Industrial</i>
Cubic fruit series	<i>Industrial</i>
Blast Freezer	<i>Industrial</i>
	<i>Industrial</i>
	<i>Industrial</i>
Centrifugal	<i>Industrial</i>
Cubic	<i>Plug Fan</i>

FREON	CO2	NH3	BRINE
LTE 25	LTH 25	N.A.	N.A.
KTE 30	KTH 30	N.A.	KTG 30
WTE 25	N.A.	N.A.	WTG 25
WCE 45	N.A.	N.A.	WCG 45
KDE 23	KDH 23	N.A.	N.A.
KDE 35	KDH 35	KDN 35	KDG 35
CCE 25-30-35-45	CCH 25-30-35-45	N.A.	CCG 30-35-45
KDE 45-50-63	KDH 45	KDN 50-63	KDG 45-50-63
CCE 50-56	CCH 50-56	N.A.	CCG 50-56
KCE 56-63-71-91	KCH 63-91	KCN 50-63-71-91	KCG 56-63-71-91
KFE 35-50-63	KFH 35-50-63	KFN 50-63	KFG 35-50-63
KBE 50-63	KBH 50-63	KBN 50-63	N.A.
BPE 63-71	BPH 63-71	BPN 63-71	N.A.
NPE 71	NPH 71	NPN 71	N.A.
UTE 10-15-18	N.A.	N.A.	UTG 10-15-18
RCE 50-63	N.A.	N.A.	RCG 50-63

UNIT COOLERS

COMMERCIAL CORNER / U.S.P.H.S.



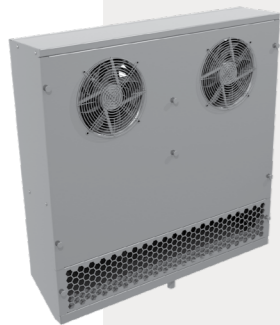
LTE 25

min: 0,4 kW
max: 3,8 kW



KTE 30

min: 1,3 kW
max: 12,8 kW



WTE 25A

min: 3,7 kW
max: 7,4 kW



WCE 45A

min: 6,3 kW
max: 11,3 kW

UNIT COOLERS

COMMERCIAL/INDUSTRIAL
DUAL DISCHARGE



KDE 23

min: 0,9 kW
max: 6,1 kW



KDE 35

min: 2 kW
max: 27 kW



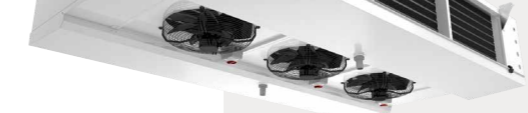
KDE 45

min: 6 kW
max: 56 kW



KDE 50

min: 6 kW
max: 105 kW



KDE 63

min: 10 kW
max: 134 kW

UNIT COOLERS

COMMERCIAL/INDUSTRIAL CUBIC



CCE

25 | 30 | 35

min: 1 kW
max: 32 kW

KCE

45

min: 4 kW
max: 42 kW



CCE

50A | 50B | 56A

min: 6 kW
max: 106 kW

KCE

56B | 63A

min: 12 kW
max: 156 kW



KCE

63B | 71A | 91A

min: 11 kW
max: 199 kW

UNIT COOLERS

CUBIC FRUIT COOLER



KFE

35A | 50A | 63A

min: 6 kW
max: 92 kW

INDUSTRIAL SHOCK FREEZER



KBE

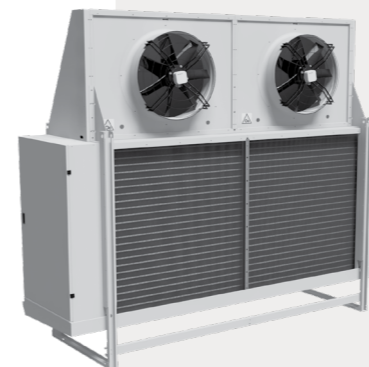
50A | 63A

min: 11 kW
max: 197 kW

BPE

63A | 71A

min: 16 kW
max: 170 kW



NPE

71A

min: 24 kW
max: 199 kW

UNIT COOLERS

CENTRIFUGAL EVAPORATOR UNIT

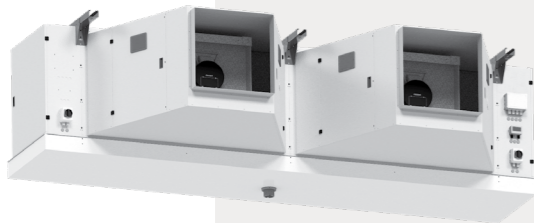


 **UTE** EC FANS


 min: **11 kW**
max: **105 kW**

12A | 15A | 18A

PLUG FAN



 **RCE**

 min: **14 kW**
max: **91 kW**

50A | 63A

CONDENSERS

models available



Condenser	
	<i>Commercial</i>
	<i>Industrial</i>
	<i>Industrial</i>
	<i>"V" Shape</i>
	<i>Radial</i>

FREON	CO2	NH3	BRINE <i>(dry cooler)</i>
AR 350-450	On Request	N.A.	AG 350-450
BR 500-630	On Request	On Request	BG 500-630
CR 910	On Request	On Request	CG 910
WR 910	On Request	On Request	WG 910
ZR 630	On Request	On Request	ZG 630

CONDENSERS

COMMERCIAL REMOTE CONDENSERS



AR
350 | 450

min: 5 kW
max: 159 kW



BR
500 | 630

min: 16 kW
max: 340 kW

INDUSTRIAL REMOTE CONDENSERS

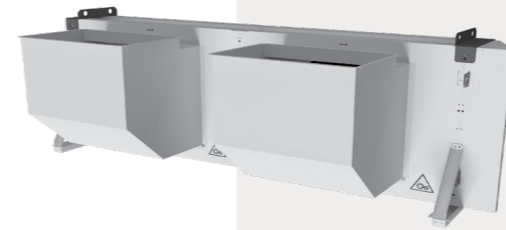


CR
910

min: 43 kW
max: 1280 kW

CONDENSERS

RADIAL REMOTE CONDENSERS



ZR
630

min: 94 kW
max: 396 kW

V-SHAPE REMOTE CONDENSERS




WR
910

min: 45 kW
max: 762 kW


DRY COOLERS




BG
500

 min: 8 kW
max: 232 kW

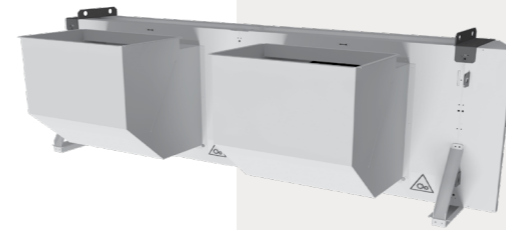
BG
630

 min: 12 kW
max: 352 kW

CG
910

 min: 25 kW
max: 756 kW

DRY COOLERS



ZG
630

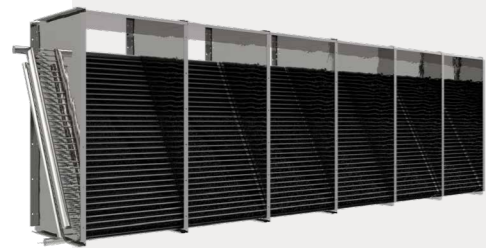
 min: 65 kW
max: 225 kW



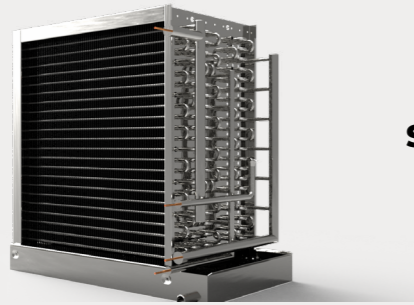
WG
910

 min: 40 kW
max: 720 kW

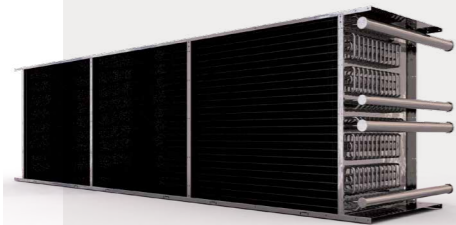
COILS



OEM COILS



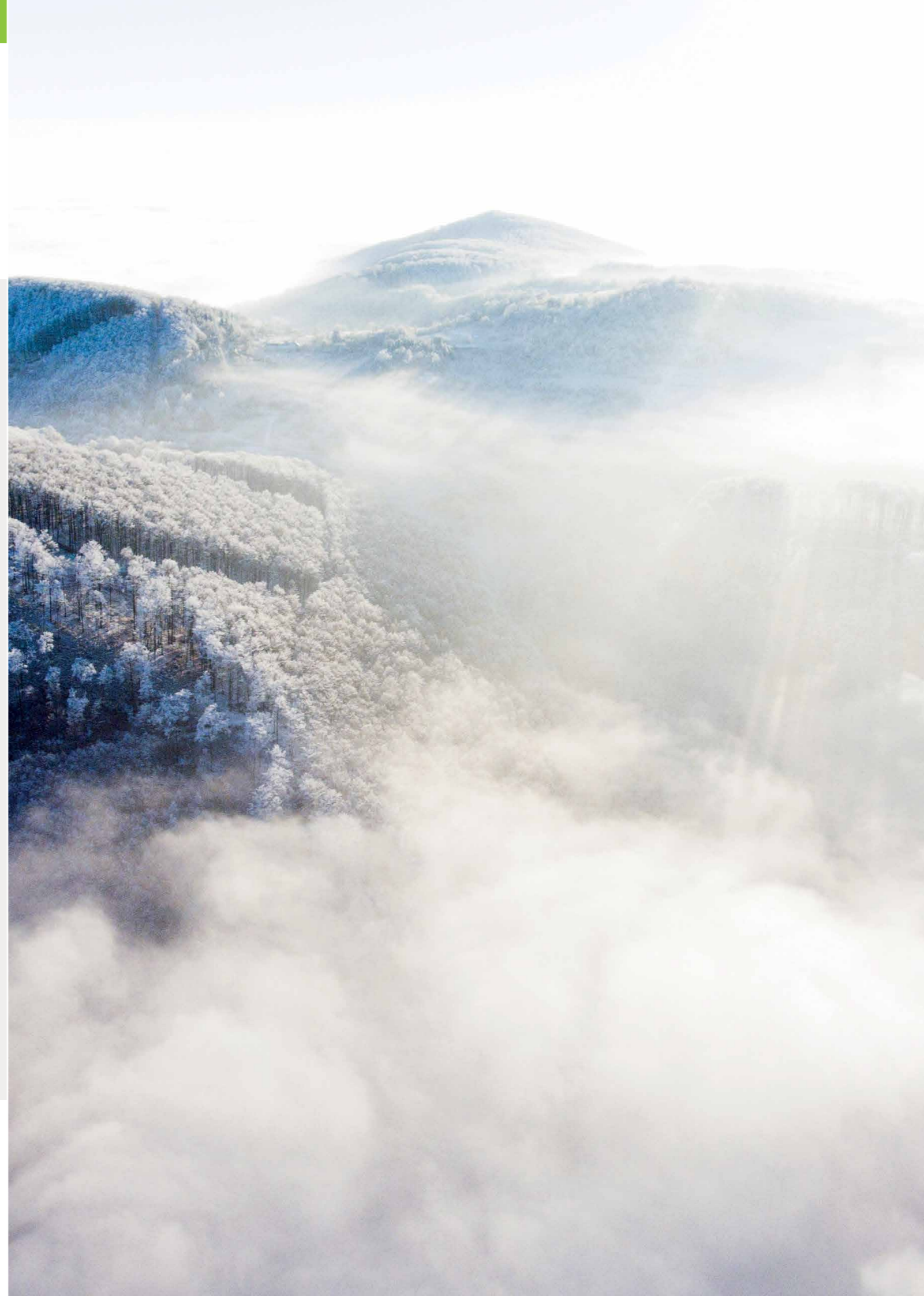
SPECIAL COILS



NH3 COILS



A/C DUCT COILS





Contact Info

K.F.L. EST S.r.l.

via dal Bosc 10
34076 Romans d'Isonzo
(Gorizia) ITALIA

phone +39 0481 950942

email info@kfl-est.com

web www.kfl-est.com

pec kflest@legalmail.it

p.iva 01211170319

